



Industries

Inspection Openings

South Australia's leading manufacturer of pre-cast concrete products including Ri Treat waste water treatment, trades waste arrestors, septic tanks and rainwater tanks

www.ri-industries.com.au



**Leaders in pre-cast concrete products
that enhance the environment**

Ri-Industries was established 1947.
We are totally committed to achieving
excellence in all that we do, which is
why South Australian residents and
businesses repeatedly buy our products
and regularly recommend us.

www.ri-industries.com.au

618 South Rd, Angle Park, SA 5010
P (08) 8444 8100 F (08) 8268 2335

About Ri Industries

Specialists in pre-cast concrete products since 1947.

Ri-Industries manufactures and supplies pre-cast concrete products. Since 1947 we have established a strong reputation for the quality of our products, service, and our knowledge, in particular, of septic tanks, waste water treatment and rainwater tanks. We are totally committed to achieving excellence in all that we do, which is why South Australian residents and businesses repeatedly buy our products and regularly recommend us.

For homeowners our Ri-Treat waste water treatment system is considered to be the finest in Australia. The same goes for our concrete septic tanks and concrete rainwater tanks. If you want a product that is of the highest quality with trouble-free maintenance then you want Ri Industries pre-cast concrete septic tanks, rainwater tanks and wastewater treatment systems.

Our wastewater treatment systems help you save water with the garden and lawn irrigation system that is included.

For businesses we offer Ri-Cycle, a commercial version of our waste water treatment system, trade waste arrestors, stormwater sumps and grates and frames, and covers. We also work regularly with civil engineering and construction companies to provide tailored pre-cast concrete solutions such as retaining wall panels, bridge parapets, pre-cast beams and arch tunnels. If you have a special project needing pre-cast concrete, we can provide the solution.

Committed to excellence

From our base in Angle Park, South Australia, we have made it our life's work to deliver outstanding pre-cast concrete products. We are committed to excellence, not only in our manufacturing techniques and processes but through every interaction we have with our customers.

We are South-Australian owned and operated and we service all parts of metropolitan Adelaide, rural and regional areas within SA and the Northern Territory.

Ri-Industries was the first South Australian company to combine the manufacture, delivery and placement of septic tanks. With engineering experience that spans over 60 years, we have developed a number of associated products to deal with sewage and waste, most notably our Ri-Treat system. Our unique design has become a leader in South Australia for the management and treatment of waste water.

All of our products are 'over-engineered'. That is how we strive for 100% excellence. Plumbers describe our products as "second-to-none" and "the best in South Australia". We are proud of our stand-out quality of product and service. This is further backed up by our on-time deliveries, knowledgeable sales team and after sales back-up services.

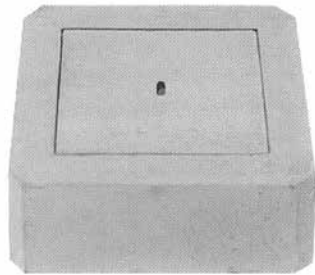
Inspection openings



Industries

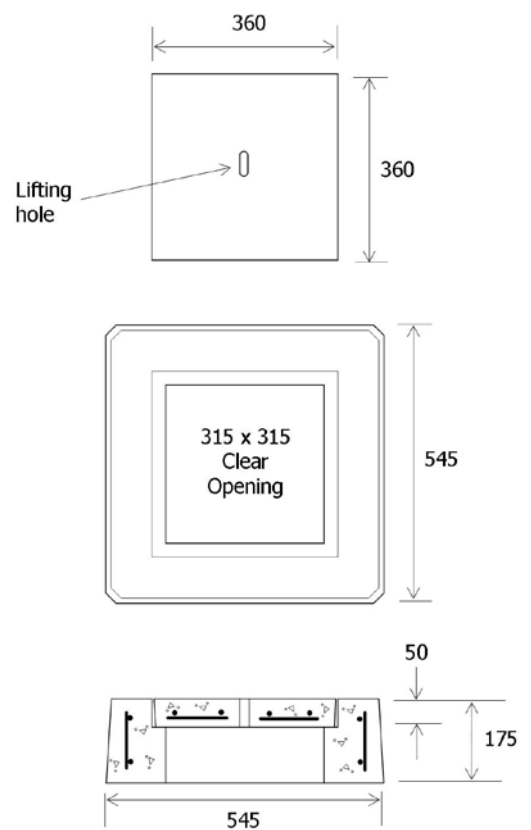
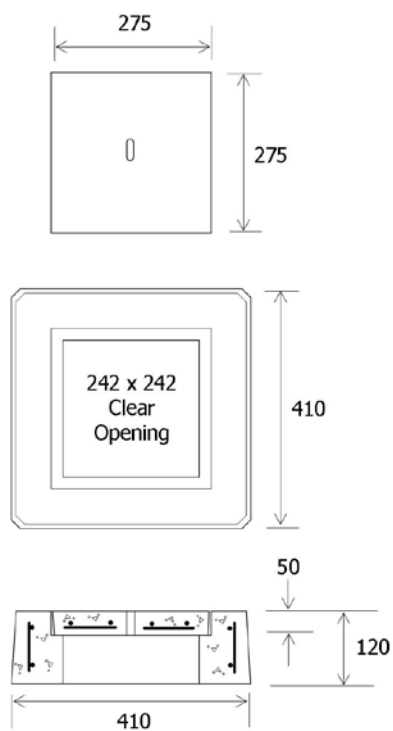
Precast concrete inspection cover

- Suitable for grassed, bituminised and paved areas
- Available in two sizes to suit 100mm or 150mm risers
- Minimum concrete strength 32 MPa at 28 days



Item	Approx Mass
100mm IP	33kg

Item	Approx Mass
150mm IP	83kg

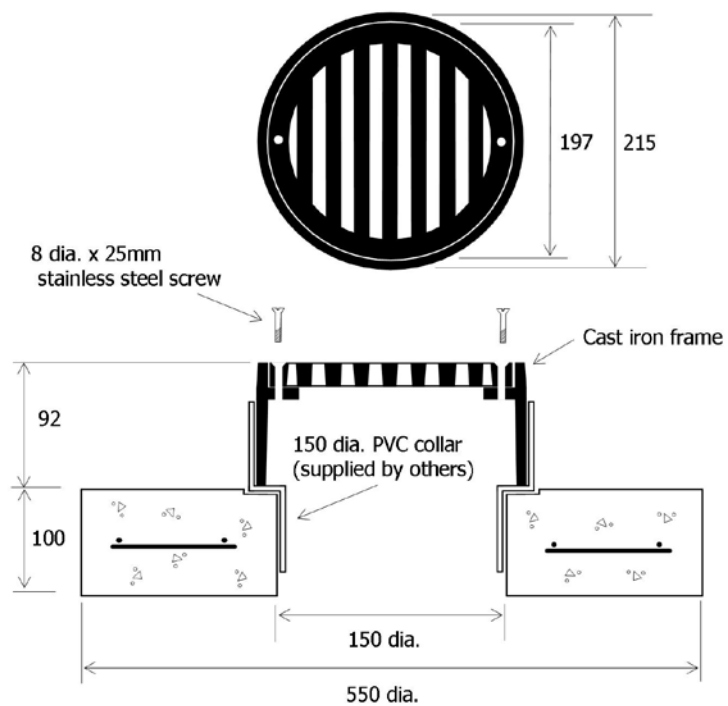


Grated stormwater collection point

- Cast iron grate and frame
- Provides stormwater collection to 150mm drains (fits 150mm PVC collar)
- Suitable for all paved, bituminised and concreted areas
- Tar dipped grate and frame

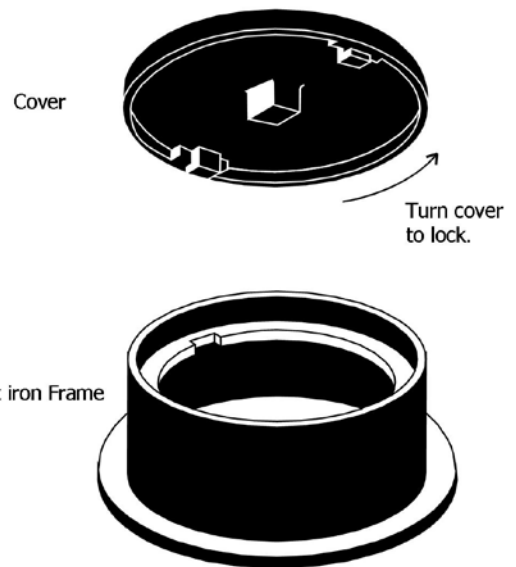
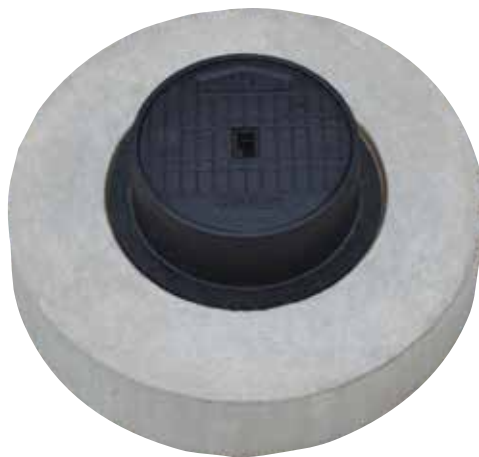


Item	Approx Mass
Grate and frame	5kg

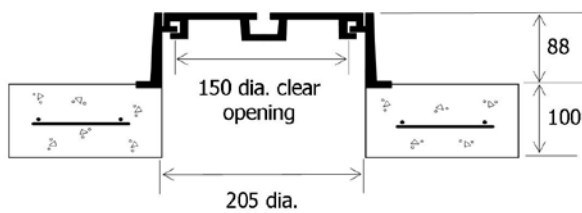


Flanged I.O. cover and frame • Type 1

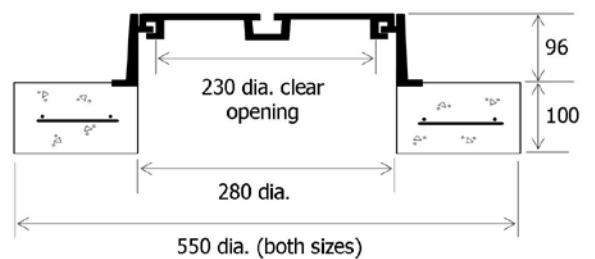
- Suitable for use in concreted and paved areas
- Available in two sizes to suit 100mm or 150mm risers
- Cast iron frame and cover are tar dipped
- Available in bolt down
- Minimum concrete strength 32 MPa at 28 days
- Available for sewer or stormwater



Item	Approx Mass
Cover & frame	6.5kg
Support block	45kg

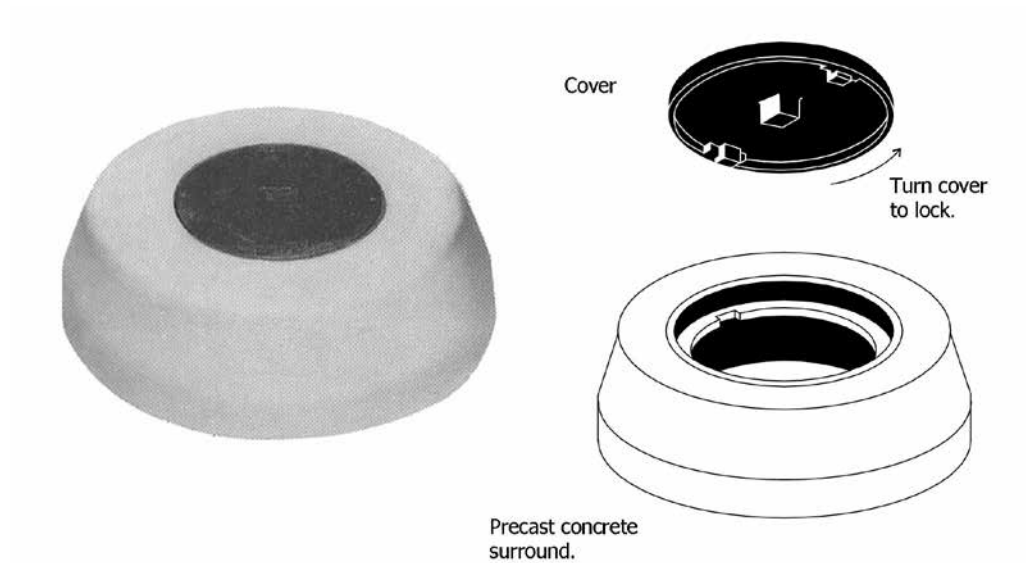


Item	Approx Mass
Cover & frame	14.5kg
Support block	40kg

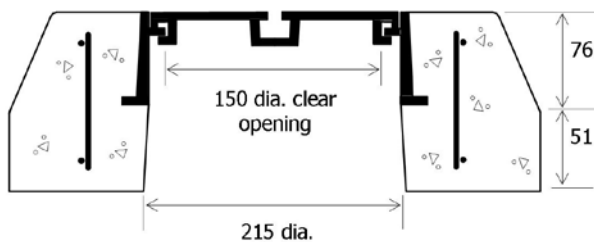


I.O. cover and frame • Type 2

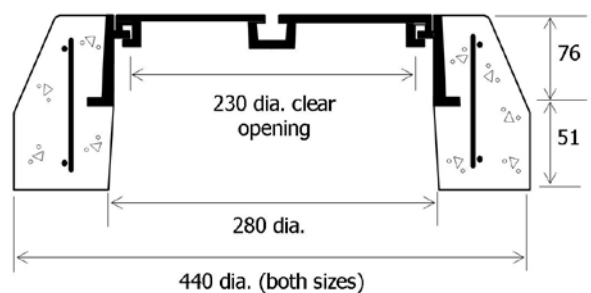
- Suitable for use in paved, bituminised and grasses areas
- Available in two sizes to suit 100mm or 150mm risers
- Cast iron frame and cover are tar dipped
- Available in bolt down
- Minimum concrete strength 32 MPa at 28 days
- Available for sewer or stormwater



Item	Approx Mass
Cover & surround	32kg



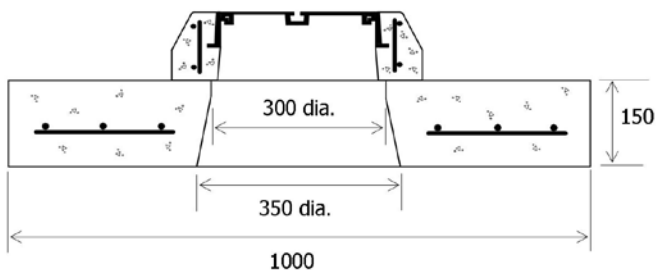
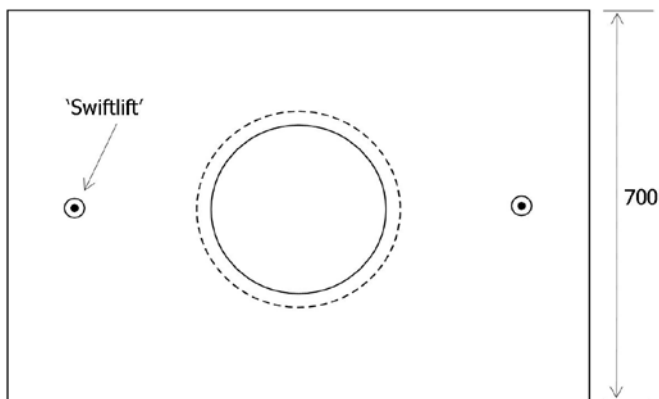
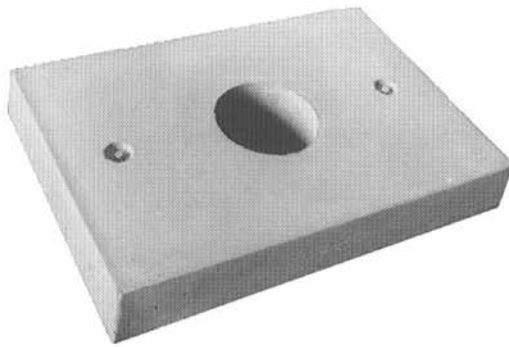
Item	Approx Mass
Cover & surround	29kg



Precast concrete flushing point support block

- For heavy surface installation with common effluent drains
- Will suit both 100mm and 150mm flushing points
- Designed to suit I.O. cover and frame type 2 (refer to Ri-Industries' data sheet E3)
- Minimum concrete strength 32 MPa at 28 days

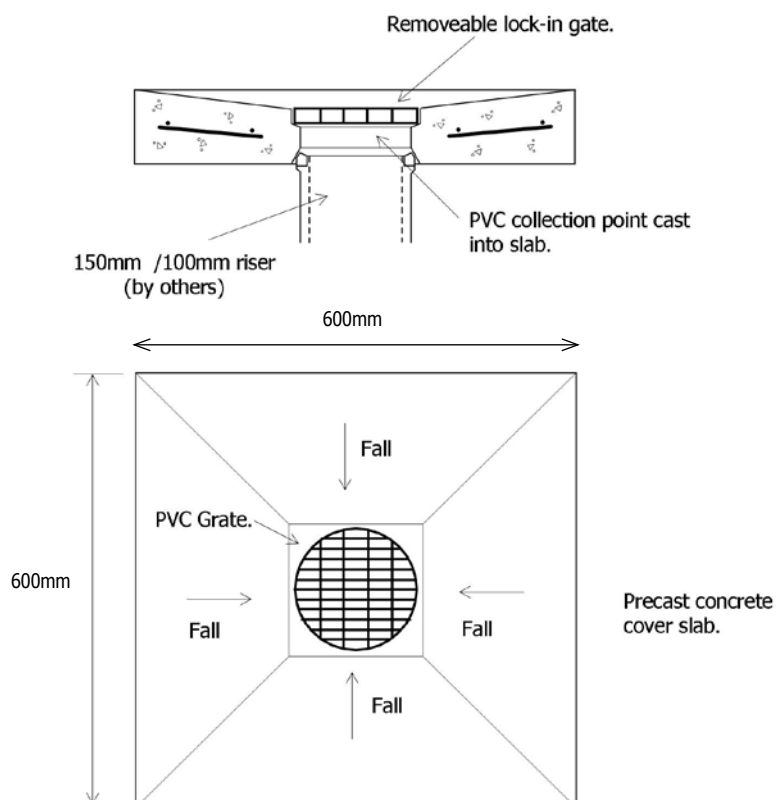
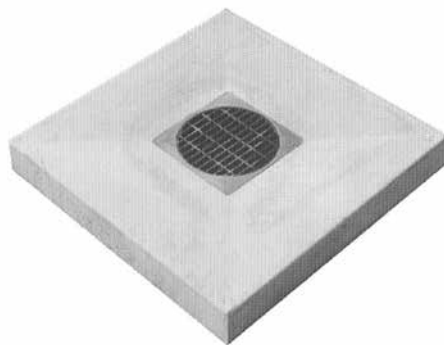
Item	Approx Mass
1,000 x 700	225kg
600 x 600	100kg



Rear of allotment collection slab

- For light service use, ie. domestic blocks where surface water collection is required
- Designed for pedestrian traffic only
- Model suits 100mm and 150mm risers
- Moulded to suit all PVC and metal stormwater grates
- PVC grate supplied with the slab
- Minimum concrete strength 32 MPa at 28 days

Item	Approx Mass
100/150mm riser	62kg



Cast iron grates & frames

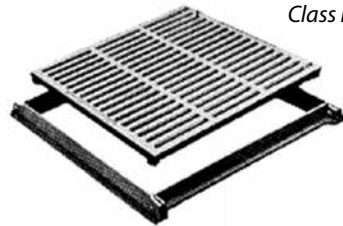
Sump grates standard sizes

Available in: 300 x 300 / 450 x 450 / 600 x 600 / 900 x 900

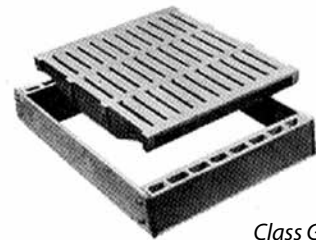
Non standard sizes available on request



Class D



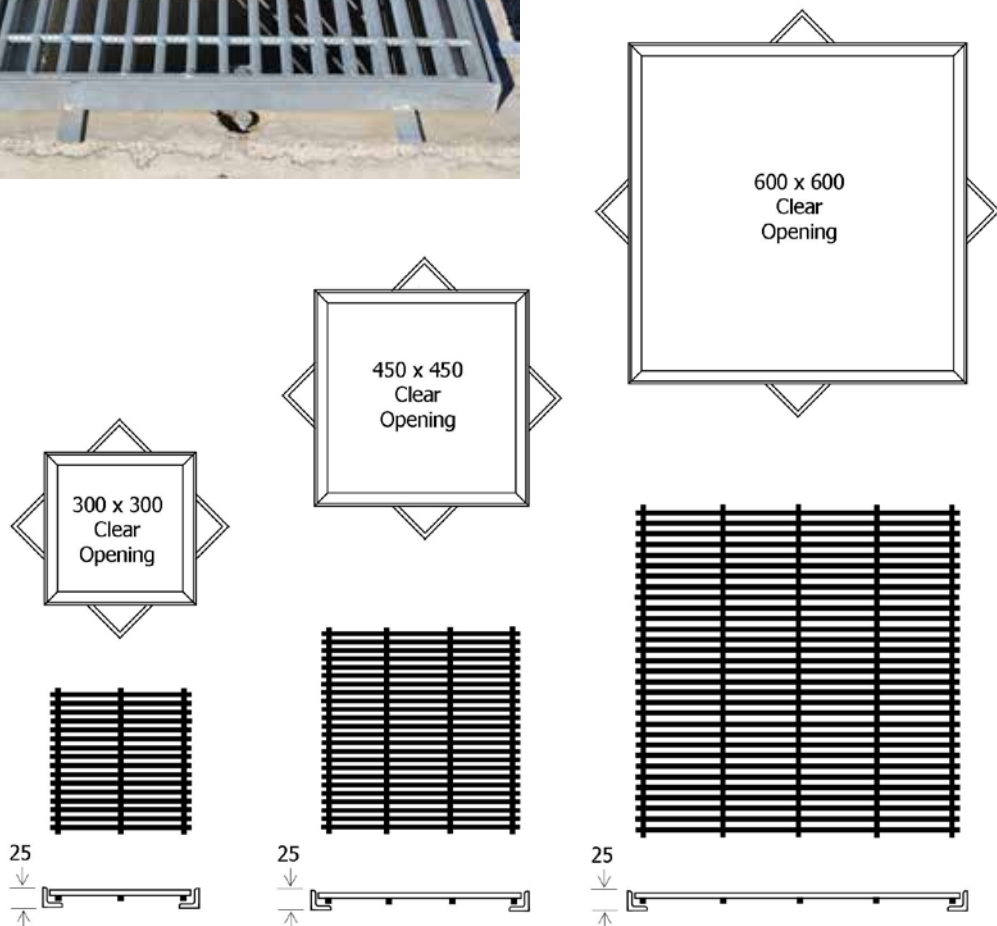
Class B



Class G

Light duty galvanised grates & frames

- Also available for heavy duty application
- Hot dipped galvanised after fabrication
- Suitable for use in concreted or bitumised areas servicing pedestrian traffic
- Special sizes to suit other pits supplied to order

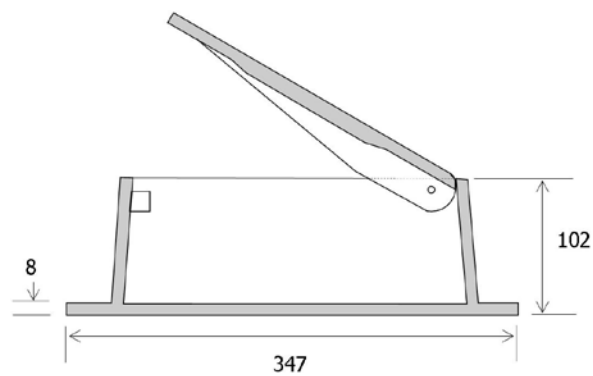
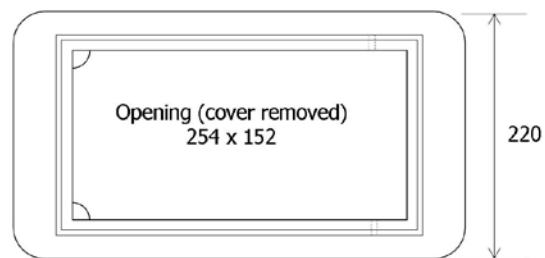
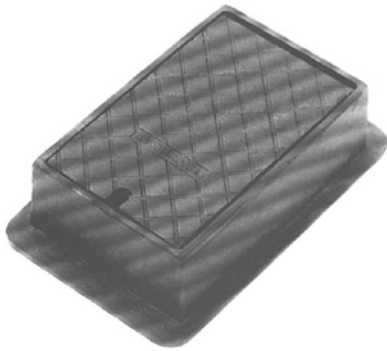


Description	Weight
300 x 300	15.5kg
450 x 450	15.5kg
600 x 600	24.5kg

Cast iron tap/valve box

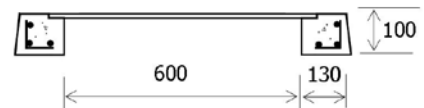
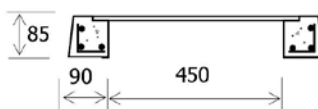
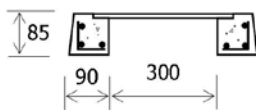
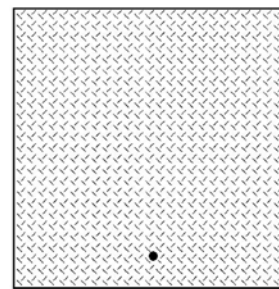
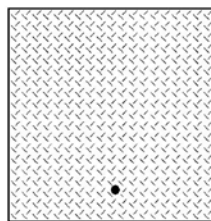
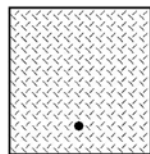
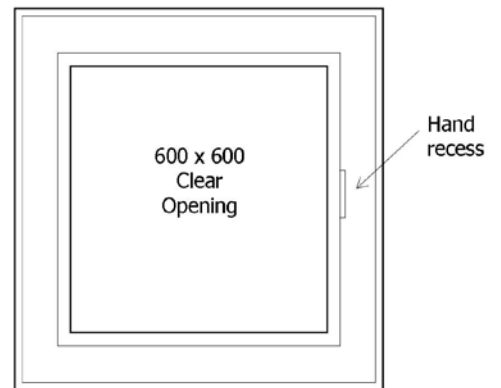
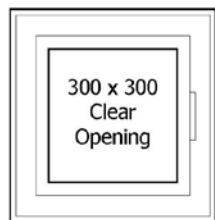
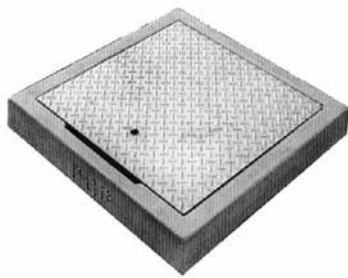
- Provides effective protection for small stop cocks, etc. located below ground level
- Tar dipped cast iron construction with steel pin hinge
- Also available with 100mm x 100mm clear opening

Opening	Approx Mass
254 x 152	12kg



Chequerplates & sump finishing collars

- 6mm thick galvanised chequerplate
- For finishing pits in grassed, bituminised or paved areas
- Special sizes fabricated to order
- Minimum concrete strength 32 MPa at 28 days



Item	Weight
300 x 300 Plate	6.5kg
300x 300 Surround	21.5kg

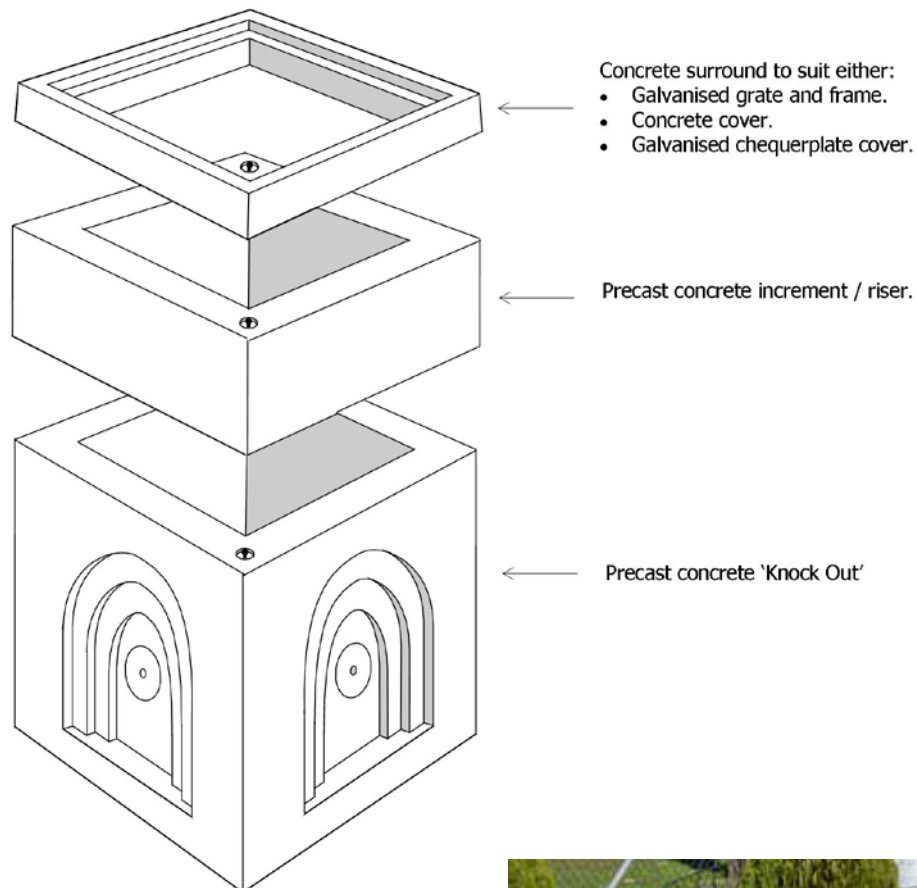
Item	Weight
450 x 450 Plate	13.5kg
450 x 450 Surround	21.5kg

Item	Weight
600 x 600 Plate	6.5kg
600x 600 Surround	21.5kg

Precast concrete 'knock out' sumps

- Pre-formed to enable penetrations to be 'knocked out' with a sledge hammer at desired locations
- Available ex-stock - suitable for emergencies or tight schedules

Length	Breadth	Depth	Approx Mass
300mm	300mm	300mm	105kg
450mm	450mm	500mm	330kg
600mm	600mm	600mm	520kg





Industries

**Leaders in pre-cast concrete products
that enhance the environment**

Ri-Industries was established 1947.
We are totally committed to achieving excellence
in all that we do, which is why South Australian
residents and businesses repeatedly buy our
products and regularly recommend us.

www.ri-industries.com.au

618 South Road, Angle Park, South Australia, 5010

P (08) 8444 8100 F (08) 8268 2335

abn 81 007 647 323

