

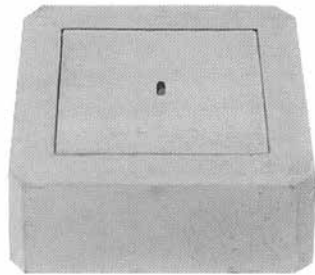
# Inspection openings



**Industries**

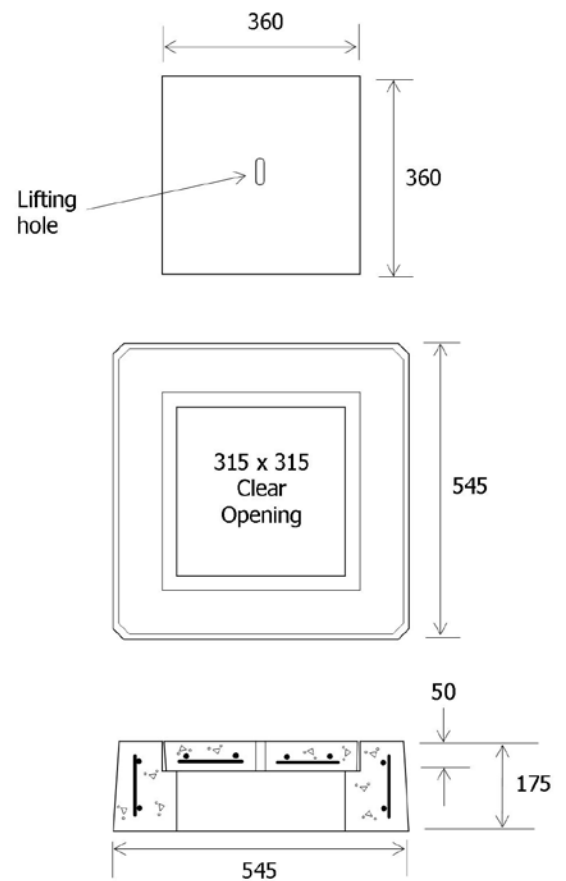
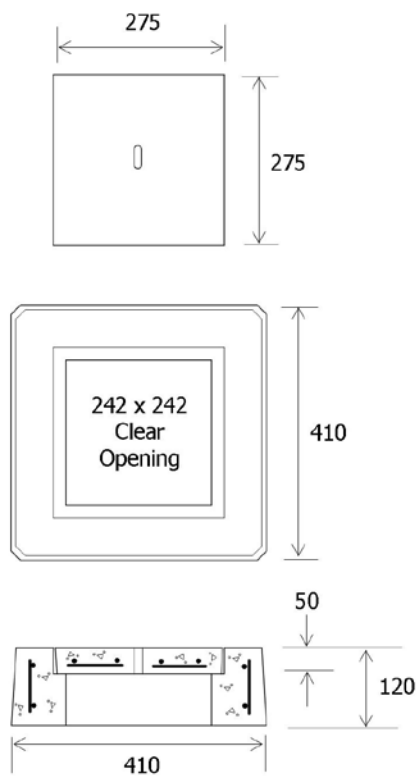
# Precast concrete inspection cover

- Suitable for grassed, bituminised and paved areas
- Available in two sizes to suit 100 mm or 150 mm risers
- Minimum concrete strength 32 MPa at 28 days



Item	Approx Mass
100 mm IP	33kg

Item	Approx Mass
150 mm IP	83kg

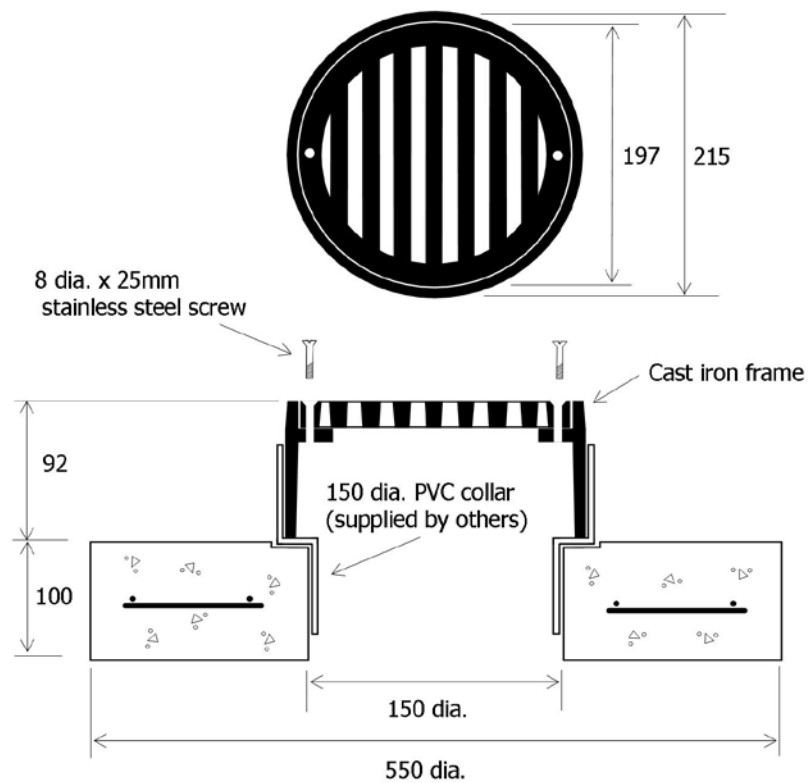


## Grated stormwater collection point

- Cast iron grate and frame
- Provides stormwater collection to 150 mm drains (fits 150 mm PVC collar)
- Suitable for all paved, bituminised and concreted areas
- Tar dipped grate and frame

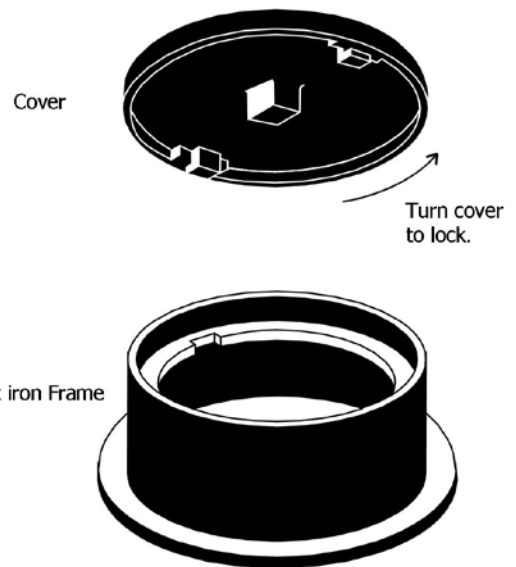
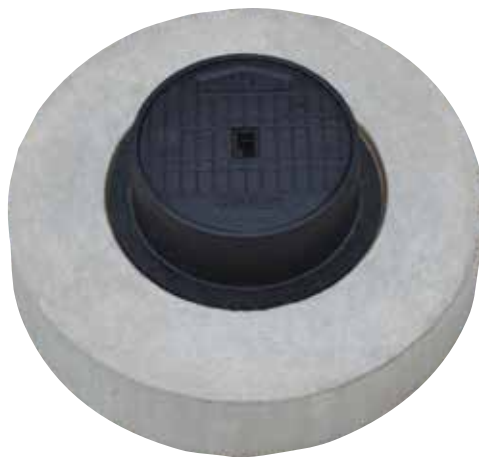


Item	Approx Mass
Grate and frame	5kg

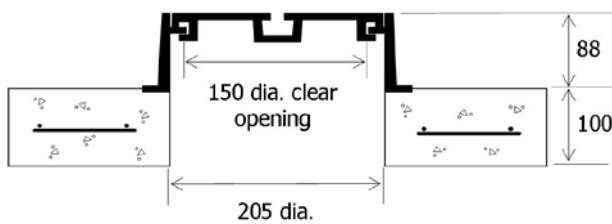


# Flanged I.O. cover and frame • Type 1

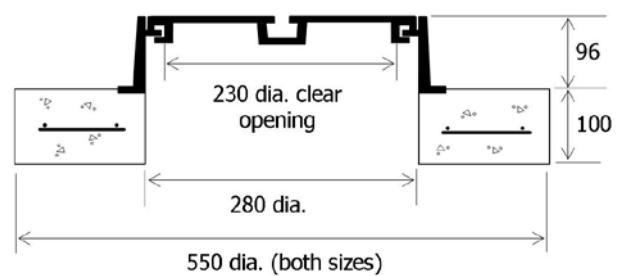
- Suitable for use in concreted and paved areas
- Available in two sizes to suit 100 mm or 150 mm risers
- Cast iron frame and cover are tar dipped
- Available in bolt down
- Minimum concrete strength 32 MPa at 28 days
- Available for sewer or stormwater



Item	Approx Mass
Cover & frame	6.5kg
Support block	45kg

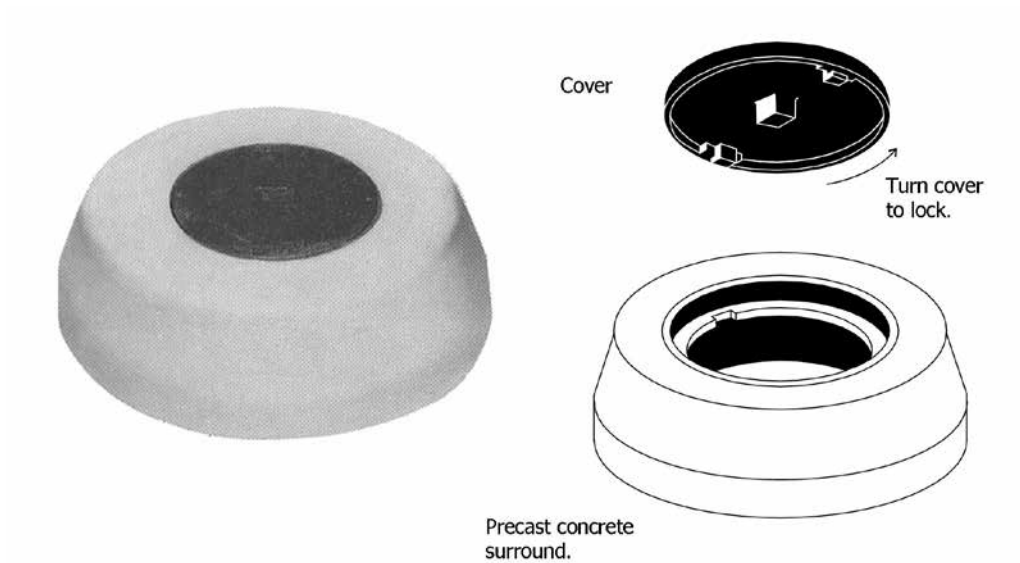


Item	Approx Mass
Cover & frame	14.5kg
Support block	40kg

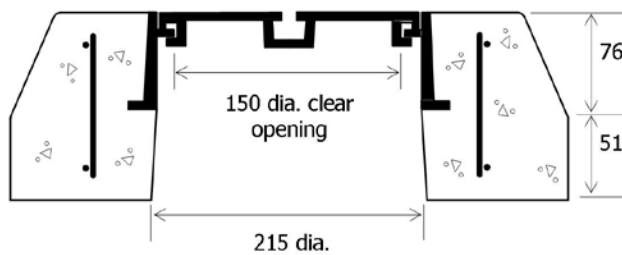


## I.O. cover and frame • Type 2

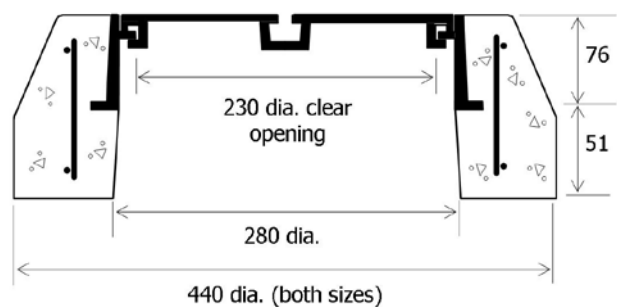
- Suitable for use in paved, bituminised and grasses areas
- Available in two sizes to suit 100 mm or 150 mm risers
- Cast iron frame and cover are tar dipped
- Available in bolt down
- Minimum concrete strength 32 MPa at 28 days
- Available for sewer or stormwater



Item	Approx Mass
Cover & surround	32kg



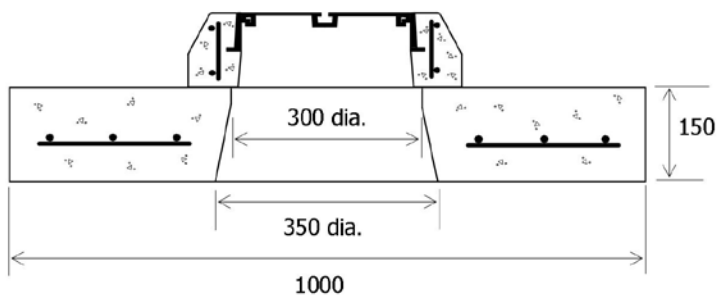
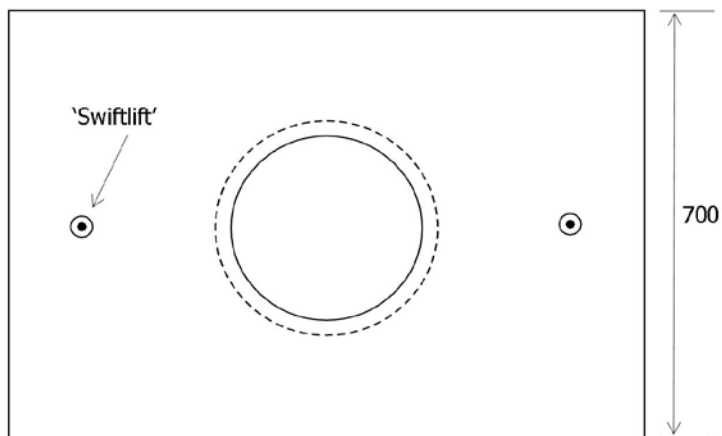
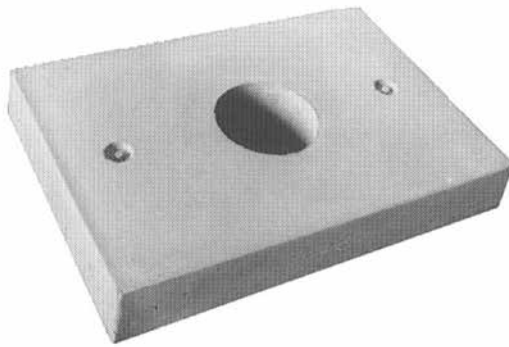
Item	Approx Mass
Cover & surround	29kg



# Precast concrete flushing point support block

- For heavy surface installation with common effluent drains
- Will suit both 100 mm and 150 mm flushing points
- Designed to suit I.O. cover and frame type 2 (refer to Ri-Industries' data sheet E3)
- Minimum concrete strength 32 MPa at 28 days

Item	Approx Mass
1,000 x 700	185kg
600 x 600	100kg



# Cast iron grates & frames

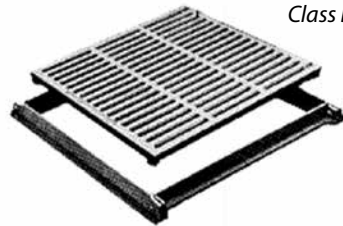
## Sump grates standard sizes

Available in: 300 x 300 / 450 x 450 / 600 x 600 / 900 x 900

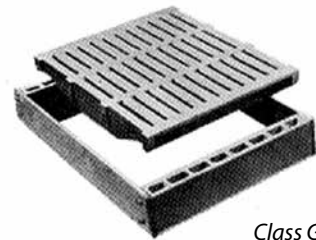
Non standard sizes available on request



*Class D*



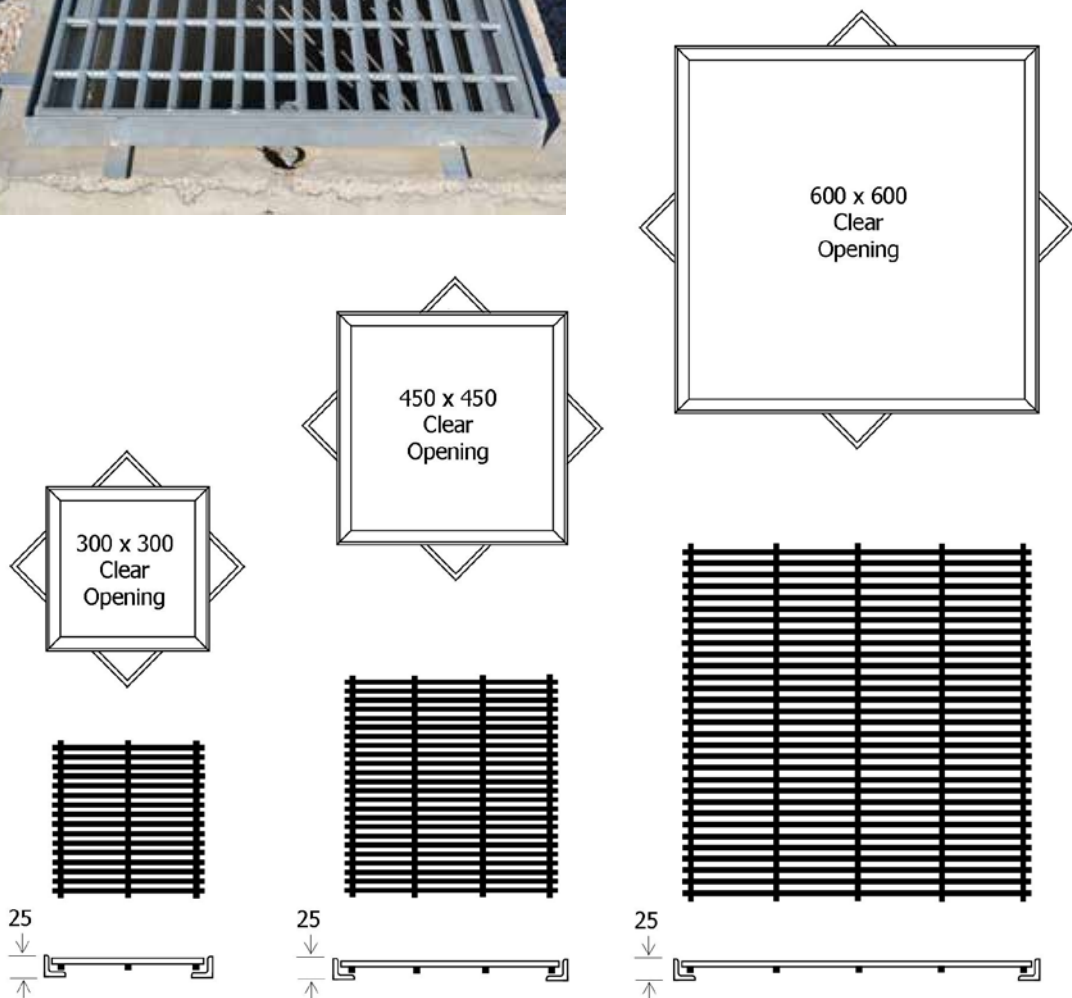
*Class B*



*Class G*

## Light duty galvanised grates & frames

- Also available for heavy duty application
- Hot dipped galvanised after fabrication
- Suitable for use in concreted or bitumised areas servicing pedestrian traffic
- Special sizes to suit other pits supplied to order

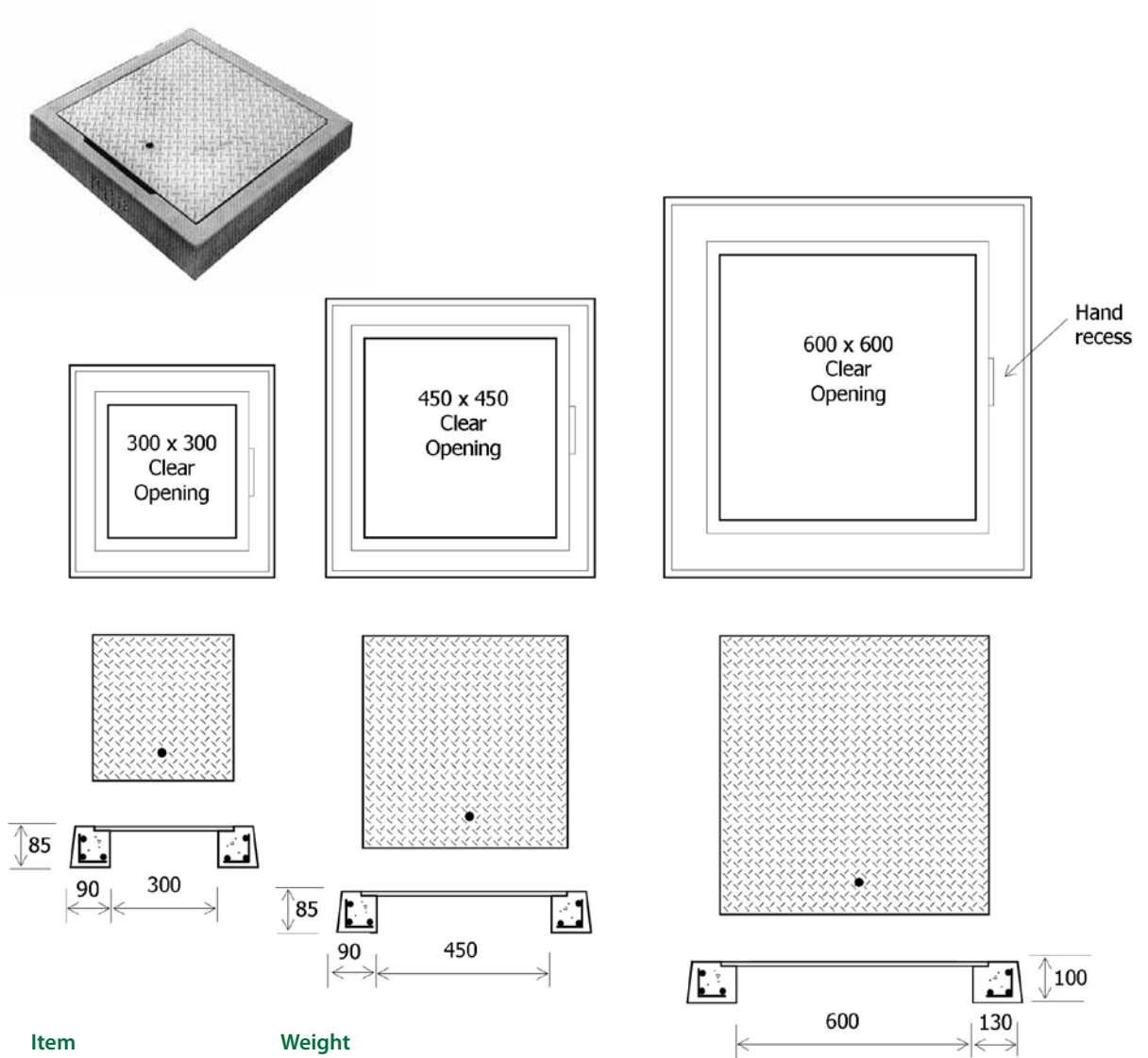


Description	Weight
300 x 300	15.5kg
450 x 450	15.5kg
600 x 600	24.5kg



# Chequerplates & sump finishing collars

- 6 mm thick galvanised chequerplate
- For finishing pits in grassed, bituminised or paved areas
- Special sizes fabricated to order
- Minimum concrete strength 32 MPa at 28 days



Item	Weight
300 x 300 Plate	6.5kg
300x 300 Surround	21.5kg

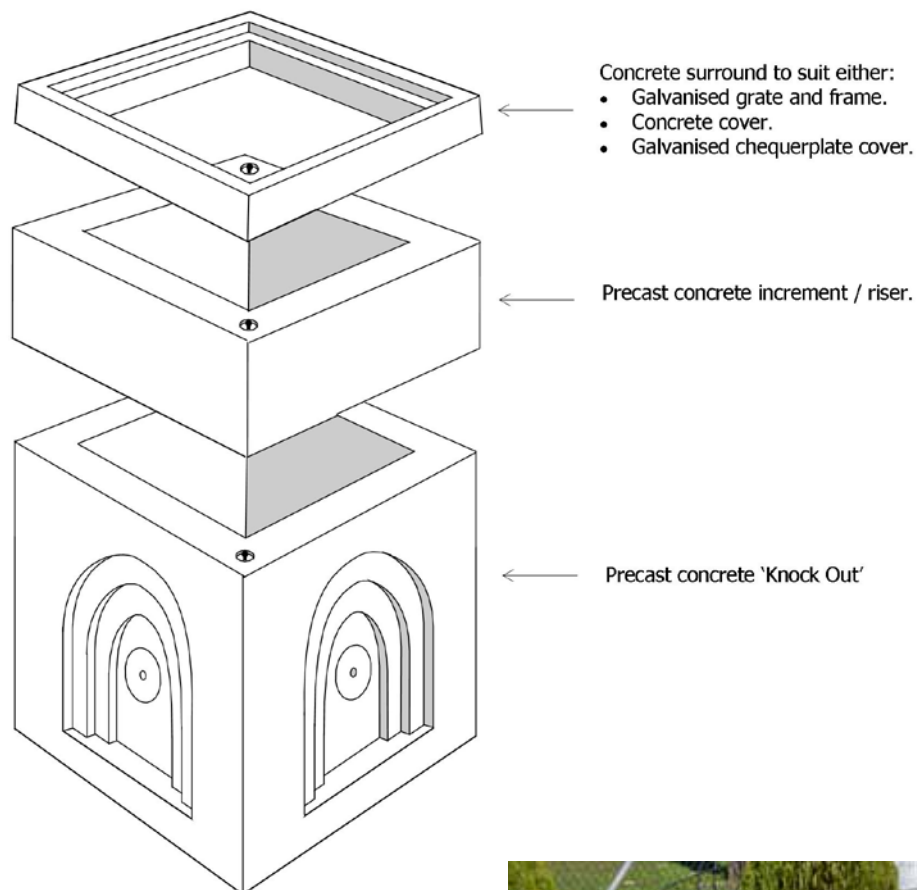
Item	Weight
450 x 450 Plate	13.5kg
450 x 450 Surround	21.5kg

Item	Weight
600 x 600 Plate	6.5kg
600x 600 Surround	21.5kg

## Precast concrete 'knock out' sumps

- Pre-formed to enable penetrations to be 'knocked out' with a sledge hammer at desired locations
- Available ex-stock - suitable for emergencies or tight schedules

Length	Breadth	Depth	Approx Mass
300 mm	300 mm	300 mm	120kg
450 mm	450 mm	500 mm	420kg
600 mm	600 mm	600 mm	570kg
600 mm	600 mm	900 mm	775kg





**Industries**

**Leaders in pre-cast concrete products  
that enhance the environment**

Ri-Industries was established 1947.  
We are totally committed to achieving excellence  
in all that we do, which is why South Australian  
residents and businesses repeatedly buy our  
products and regularly recommend us.

**[www.ri-industries.com.au](http://www.ri-industries.com.au)**

618 South Road, Angle Park, South Australia, 5010

P (08) 8444 8100

ABN 81 007 647 323

